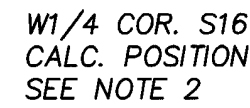


BOUNDARY LINE ADJUSTMENT IN THE W1/2, SECTION 16, T.20N., R.15E., W.M. KITTITAS COUNTY WASHINGTON

NW COR. S16
FD. CONC. MON
SEE NOTE 2

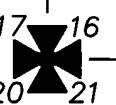


W1/4 COR. S16
CALC. POSITION
SEE NOTE 2

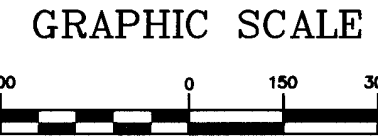
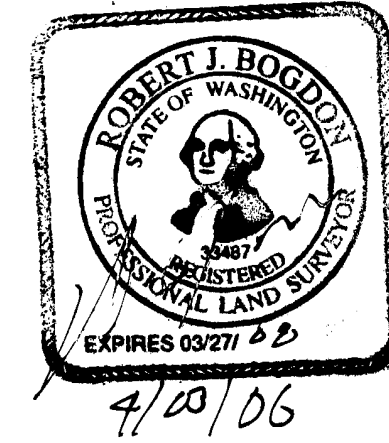


EXIST. 60' ACCESS &
UTILITY EASEMENT PER
REC. NO. 200301130065.
(TO BE AMENDED)

SW COR. S16
FD. CONC. MON
SEE NOTE 2



S1/4 COR. S16
CALC. POSITION
SEE NOTE 2



(IN FEET)
1 inch = 300 ft.

COMBINED PROJECT SCALE FACTOR = 0.9998681
ALL DISTANCES SHOWN ARE GRID UNLESS OTHERWISE INDICATED

EXISTING LEGAL DESCRIPTIONS:

PARCEL 1

LOT 2 AS DESCRIBED AND DELINEATED ON THAT CERTAIN SURVEY FILED
APRIL 5, 2002 IN BOOK 27 OF SURVEYS ON PAGE 128, RECORDS OF
KITTITAS COUNTY, WASHINGTON.

PARCEL 2

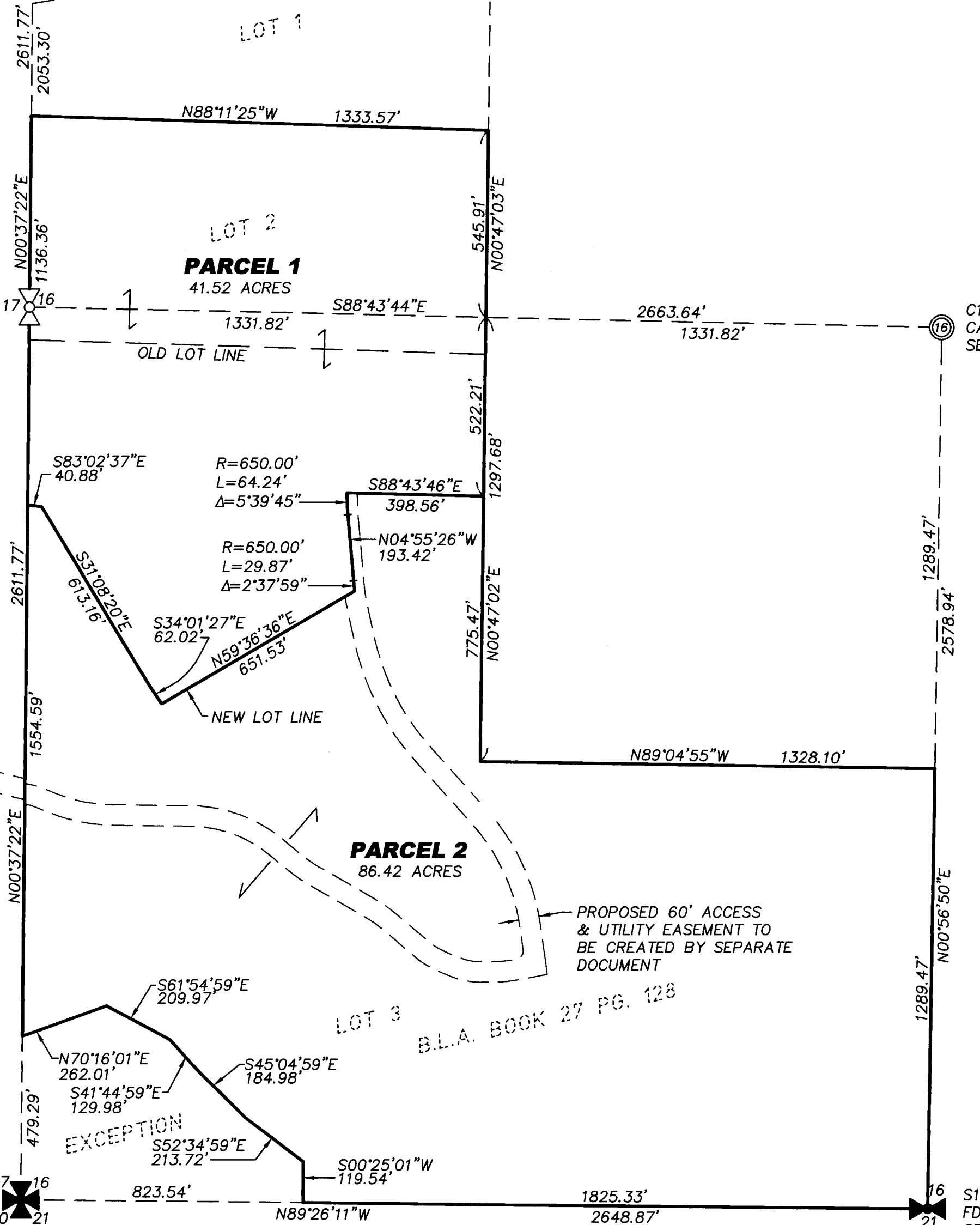
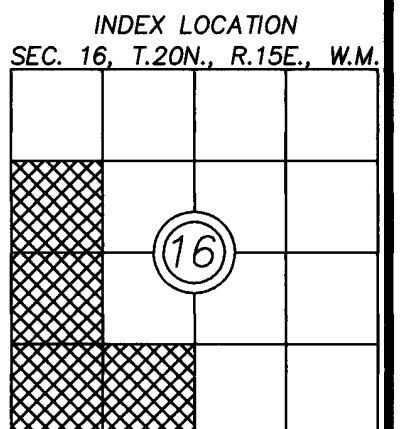
LOT 3 AS DESCRIBED AND DELINEATED ON THAT CERTAIN SURVEY FILED
APRIL 5, 2002 IN BOOK 27 OF SURVEYS ON PAGE 128, RECORDS OF
KITTITAS COUNTY, WASHINGTON.

SURVEY NOTES:

1. BASIS OF BEARINGS IS THE WASHINGTON STATE PLANE COORDINATE SYSTEM, N.A.D. 83/91, SOUTH ZONE BASED ON A RECORD OF SURVEY LISTED IN NOTE 2 BELOW. THE COMBINED PROJECT SCALE FACTOR IS 0.9998681. ALL DISTANCES SHOWN HEREON ARE GRID DISTANCES UNLESS OTHERWISE NOTED.
2. THE SECTION BREAK DOWN AND EXTERIOR PROPERTY BOUNDARY ARE BASED ON A RECORD OF SURVEY DONE BY THIS OFFICE AND FILED IN BOOK 25 OF SURVEYS ON PAGE 145. NO NEW FIELD WORK HAS BEEN DONE AT THIS TIME.
3. REFERENCE IS MADE TO A RECORD OF SURVEY DONE BY BLUHM ASSOCIATES AND FILED IN BOOK 27 OF SURVEYS ON PAGE 128. SAID SURVEY WAS USED TO CALCULATE THE NORTH LINE OF THE PROPERTY, AND THE EXISTING LINE BETWEEN LOTS 2 AND 3.
4. THE PURPOSE OF THIS SURVEY IS TO RECONFIGURE THE EXISTING LOTS TO THE GEOMETRY SHOWN HEREON.
5. THIS SURVEY DOES NOT PURPORT TO SHOW ALL EASEMENTS OF RECORD.

LEGEND:

- = FOUND SECTION CORNER W/DESCRIPTION
- = FOUND QUARTER CORNER W/DESCRIPTION
- = CALCULATED SECTION CORNER POSITION
- = CALCULATED QUARTER CORNER POSITION
- = CALCULATED CENTER OF SECTION



RECORDER'S CERTIFICATE 200604060020
 FILED FOR RECORD THIS 6th DAY OF April, 2006 AT 3:00 P.M.
 IN BOOK 32 OF SURVEYS AT PAGE 127 AT THE
 REQUEST OF ROBERT J. BOGDON
 Surveyor's Name
 JAMES SELL COUNTY AUDITOR
 DEPUTY COUNTY AUDITOR

SURVEYOR'S CERTIFICATE
 THIS MAP CORRECTLY REPRESENTS A SURVEY MADE
 BY ME OR UNDER MY DIRECTION IN CONFORMANCE WITH
 THE REQUIREMENTS OF THE SURVEY RECORDING ACT AT
 THE REQUEST OF...BIG BOULDER, LLC...
 IN...FEB...2006.
 ROBERT J. BOGDON
 CERTIFICATE NO. 33487

EASTSIDE CONSULTANTS, INC.
 ENGINEERS-SURVEYORS
 415 RAINIER BLVD. NORTH
 ISSAQUAH, WASHINGTON 98027
 PHONE: 425392-5351
 FAX: 425392-4676

BOUNDARY LINE ADJUSTMENT & TAX LOT SEGREGATION FOR BIG BOULDER LLC IN THE W1/2, SECTION 16, T.20N., R.15E., W.M. KITTITAS COUNTY WASHINGTON		
DWN BY	DATE	JOB NO.
S. KITZ	2/06	03557
CHKD BY	SCALE	SHEET
R. BOGDON	1"=300'	1 OF 1

TAX LOT SEGREGATION IN THE W1/2, SECTION 16, T.20N., R.15E., W.M. KITTITAS COUNTY WASHINGTON

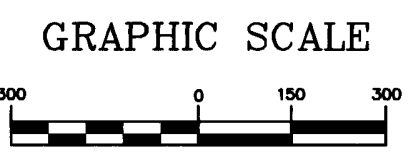
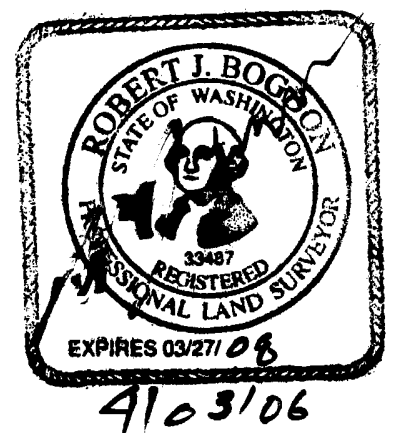
NW COR. S16
FD. CONC. MON
SEE NOTE 2

W1/4 COR. S16
CALC. POSITION
SEE NOTE 2

C1/4 COR. S16
CALC. POSITION
SEE NOTE 2

SW COR. S16
FD. CONC. MON
SEE NOTE 2

S1/4 COR. S16
FD. CONC. MON
SEE NOTE 2



(IN FEET)
1 inch = 300 ft.

COMBINED PROJECT SCALE FACTOR = 0.9998681
ALL DISTANCES SHOWN ARE GRID UNLESS OTHERWISE INDICATED

LINE TABLE

LINE	BEARING	DISTANCE
L1	S49°09'47"E	114.87'
L2	S67°49'38"E	33.26'
L3	N89°38'01"E	28.95'
L4	N79°19'45"E	51.87'

CURVE TABLE

CURVE	DELTA	RADIUS	LENGTH
C1	10°55'46"	350.00'	66.76'
C2	18°39'51"	250.00'	81.44'
C3	22°32'21"	200.00'	78.68'
C4	10°18'16"	450.00'	80.93'

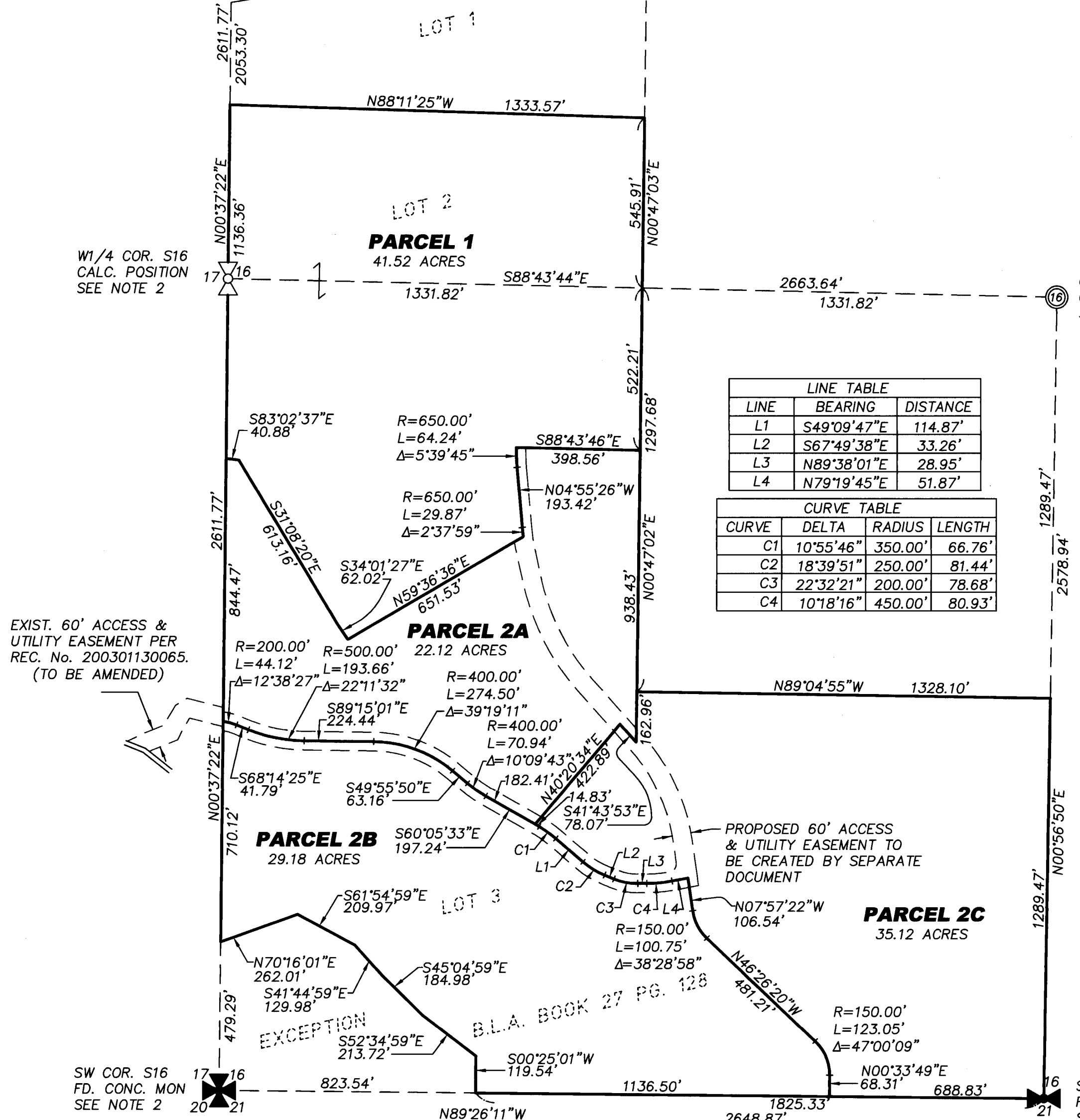
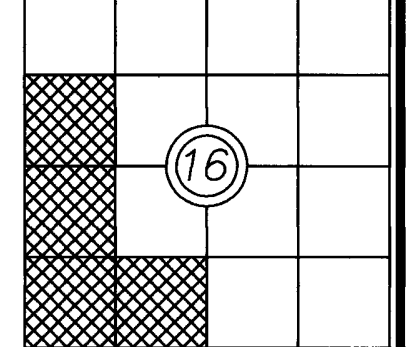
SURVEY NOTES:

1. BASIS OF BEARINGS IS THE WASHINGTON STATE PLANE COORDINATE SYSTEM, N.A.D. 83/91, SOUTH ZONE BASED ON A RECORD OF SURVEY LISTED IN NOTE 2 BELOW. THE COMBINED PROJECT SCALE FACTOR IS 0.9998681. ALL DISTANCES SHOWN HEREON ARE GRID DISTANCES UNLESS OTHERWISE NOTED.
2. THE SECTION BREAK DOWN AND EXTERIOR PROPERTY BOUNDARY ARE BASED ON A RECORD OF SURVEY DONE BY THIS OFFICE AND FILED IN BOOK 25 OF SURVEYS ON PAGE 145. NO NEW FIELD WORK OTHER THAN THE ROAD LOCATION AS SHOWN HEREON HAS BEEN DONE AT THIS TIME.
3. REFERENCE IS MADE TO A RECORD OF SURVEY DONE BY BLUHM ASSOCIATES AND FILED IN BOOK 27 OF SURVEYS ON PAGE 128. SAID SURVEY WAS USED TO CALCULATE THE NORTH LINE OF THE PROPERTY.
4. THE PURPOSE OF THIS SURVEY IS TO SEGREGATE PARCEL 2 INTO THREE LOTS WHICH ARE OVER 20 ACRES.
5. THIS SURVEY DOES NOT PURPORT TO SHOW ALL EASEMENTS OF RECORD.

LEGEND:

- = FOUND SECTION CORNER W/DESCRIPTION
- = FOUND QUARTER CORNER W/DESCRIPTION
- = CALCULATED SECTION CORNER POSITION
- = CALCULATED QUARTER CORNER POSITION
- = CALCULATED CENTER OF SECTION

INDEX LOCATION
SEC. 16, T.20N., R.15E., W.M.



RECORDER'S CERTIFICATE 200604060020
 FILED FOR RECORD THIS 6 DAY OF April 2006 AT 10:00 AM
 IN BOOK 32 OF SURVEYS AT PAGE 128 AT THE
 REQUEST OF ROBERT J. BOGDON
 COUNTY AUDITOR

SURVEYOR'S CERTIFICATE
 THIS MAP CORRECTLY REPRESENTS A SURVEY MADE
 BY ME OR UNDER MY DIRECTION IN CONFORMANCE WITH
 THE REQUIREMENTS OF THE SURVEY RECORDING ACT AT
 THE REQUEST OF BIG BOULDER, LLC.
 IN FEB. 2006

ROBERT J. BOGDON
 CERTIFICATE NO. 33487

EASTSIDE CONSULTANTS, INC.
 ENGINEERS-SURVEYORS
 415 RAINIER BLVD. NORTH
 ISSAQUAH, WASHINGTON 98027
 PHONE: (425)392-5351
 FAX: (425)392-4676

BOUNDARY LINE ADJUSTMENT & TAX LOT SEGREGATION FOR BIG BOULDER LLC IN THE W1/2, SECTION 16, T.20N., R.15E., W.M. KITTITAS COUNTY WASHINGTON

DWN BY	DATE	JOB NO.
S. KITZ	2/06	03557
CHKD BY	SCALE	SHEET
R. BOGDON	1"=300'	2 OF 2